

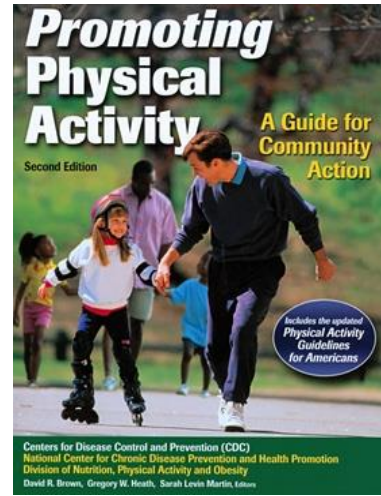
UNM PRC - Translating Prevention Research into Practice and Policy Through Community-Engaged Research, Evaluation and Service

T.H. Cruz, PhD¹, S.M. Davis, PhD¹, R.L. Kozoll, MD, MPH², A. Schulte², S. I. Mishra, PhD¹(presenter)

¹UNM Prevention Research Center (PRC), ²Nacimiento Community Foundation (NCF)



Research Question



How does a small, rural community effectively implement the CDC's Community Guide recommendations for promoting physical activity?

Research Overview

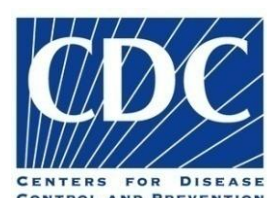
5 year, CDC-funded, research study to:

- Investigate the effectiveness of implementation of the CDC's Community Guide recommendations
- Evaluate community-campus partnership
- Develop a guidebook for translating Community Guide recommendations into practice and policy for use in similar communities

Partners

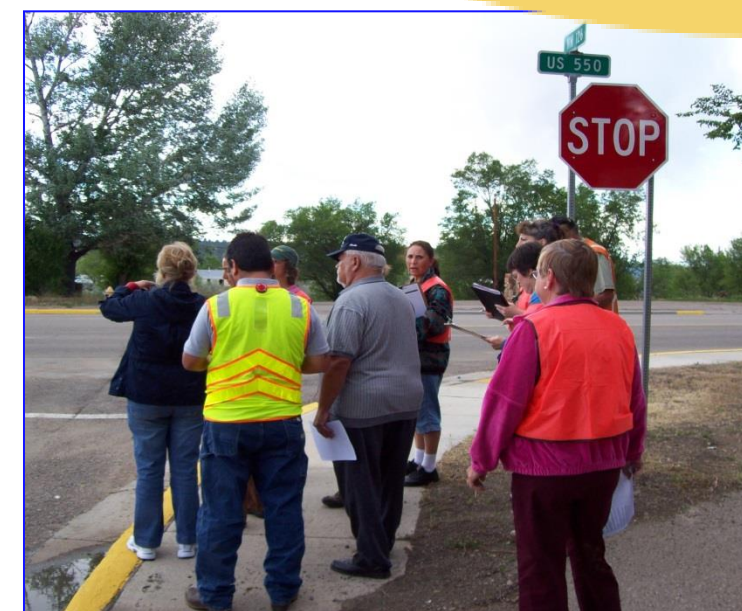
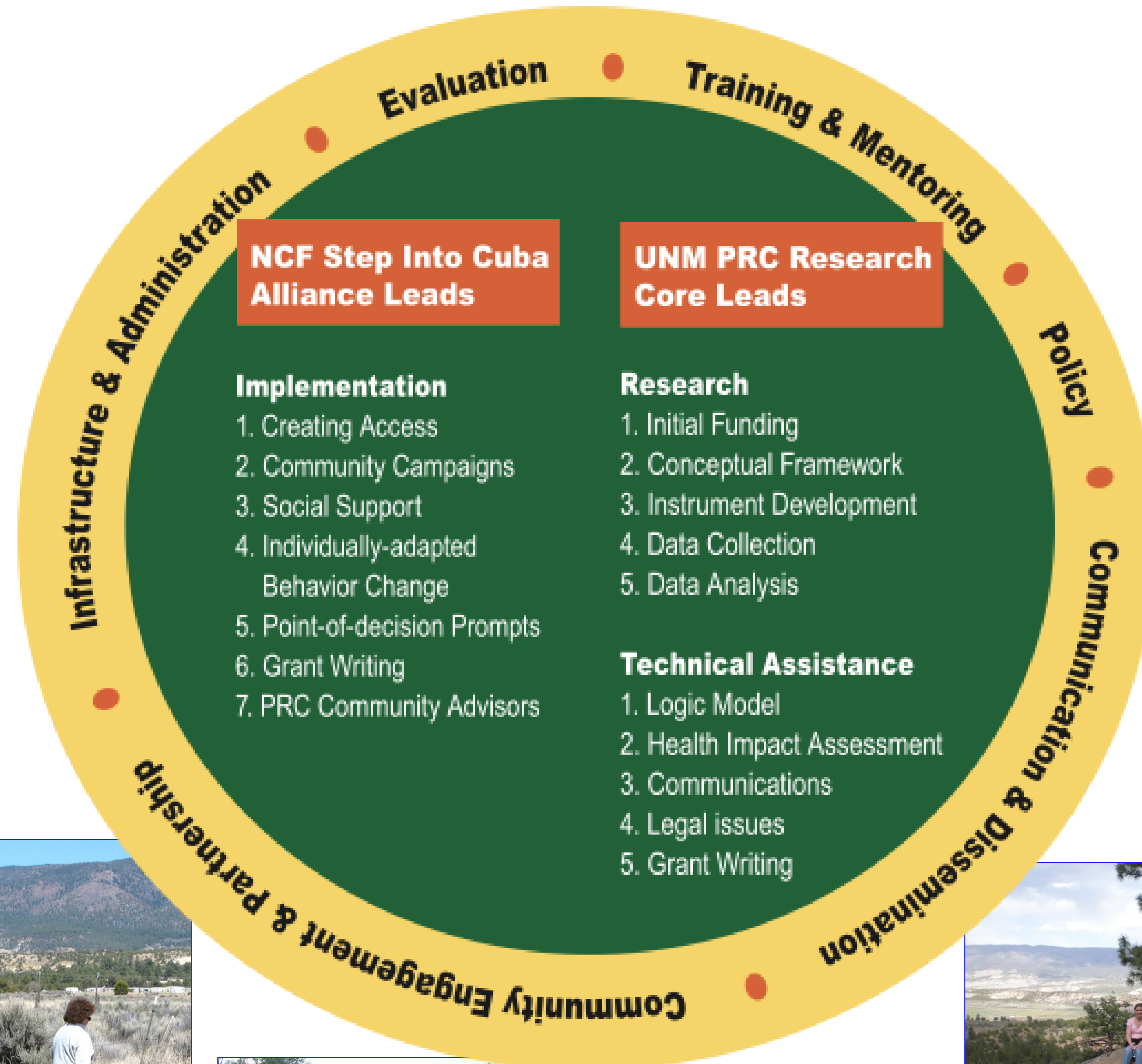


For more information on Step Into Cuba visit www.stepintocuba.org



This research is supported by Cooperative Agreement Number 1U48DP001931-2 from the Centers for Disease Control and Prevention, Prevention Research Centers Program. The information in this poster is that of the authors and does not necessarily represent the official position of the Centers for Disease Control and Prevention.

Village Interventions and Venues for Activity (VIVA)



UNM PRC Team:
Sally Davis, Shiraz Mishra, Theresa Cruz, Susan DeFrancesco, Janet Page-Reeves, Linda Beltran, Keena Figueroa, Mary Hanrahan, Jackie Morgan, Elena O'Donald, Emily Pilch, Alicia Rodriguez, Judith Sheche, Shari Smoker, Leslie Trickey.

Research Methods

- Community case study
- Research questions developed from the community and the literature
- Mixed (qualitative and quantitative) methods
- Observation and documentation
- Observational studies (e.g., pedestrian counts)
- Surveys (e.g., general population)
- Structured interviews (e.g., Rx Trails)
- Semi-structured interviews (e.g., Alliance members)
- Focus groups (e.g., walking group members)

Research Partnership Highlights

- Joint creation of a logic model helps establish a common understanding of a project and provides a road map to follow
- Open and regular communications between researchers and the community is critical – electronic medium facilitates
- Mutual respect must be earned and fostered
- Bi-directional sharing of skills, capacities & resources is a crucial component of the project
- Research sensitivity to community politics and cultures is necessary for the joint effort to continue
- Collaboration leads to problem-solving and encourages new ideas
- Energy of the community champions, combined with small successes, builds community and generates further enthusiasm, participation and volunteerism

For more information on the UNM PRC visit hsc.unm.edu/som/prc